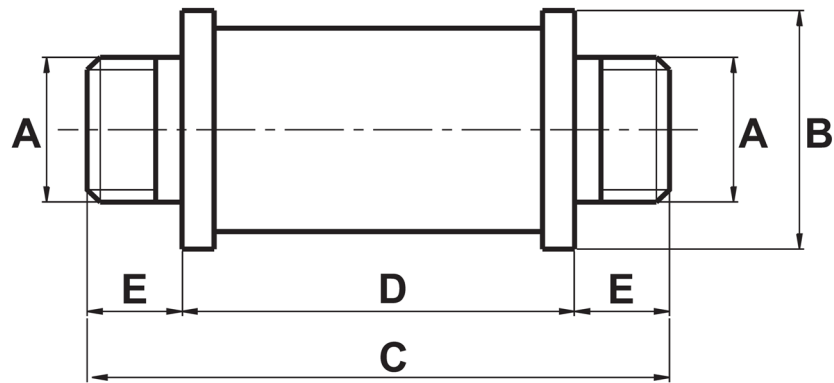




*Silenziatore G1-1/4" doppio*

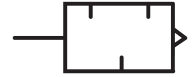


| CARATTERISTICA                | VALORE |
|-------------------------------|--------|
| Temperatura max. di esercizio | 100 °C |



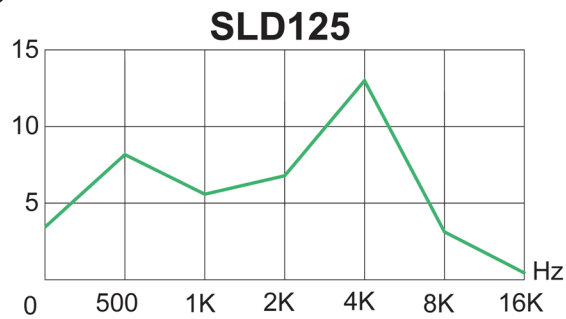
Originale: 1304×676 px (110.4×57.2 mm) | Mostrata: 110.4×57.2 mm | Ridimensionata: NO

| A       | B  | C   | D   | E  |
|---------|----|-----|-----|----|
| G 1"1/4 | 69 | 242 | 138 | 52 |

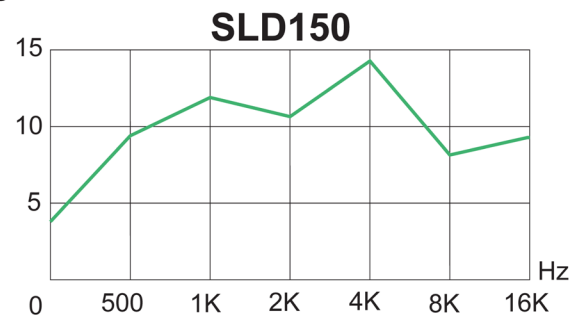


**Valori indicativi medi di attenuazione**

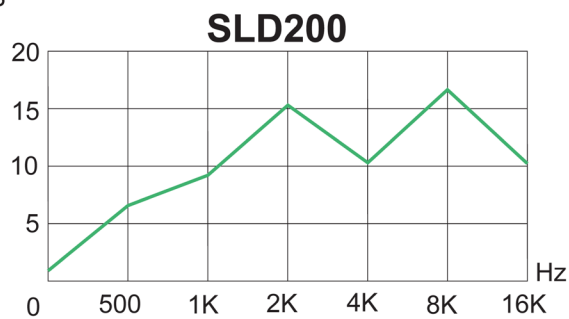
dB



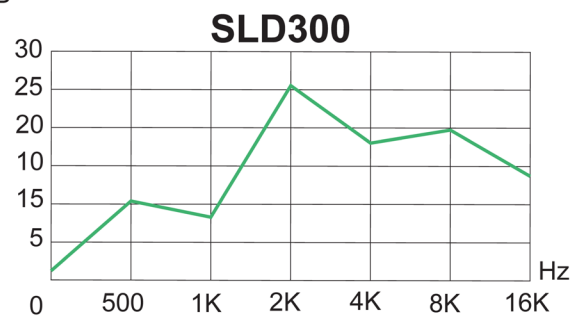
dB



dB



dB



Originale: 2021×1135 px (171.1×96.1 mm) | Mostrata: 171.1×96.1 mm | Ridimensionata: NO