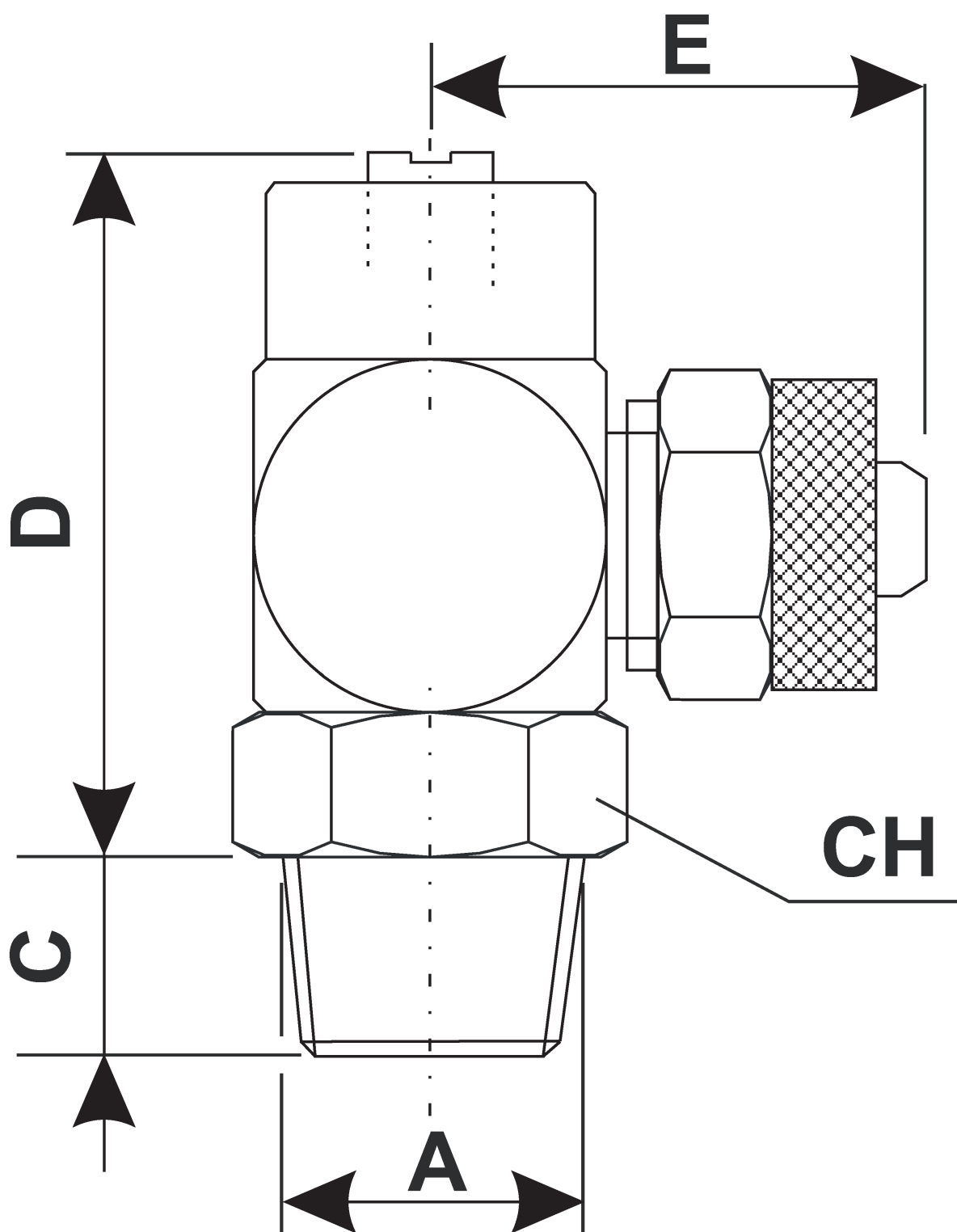
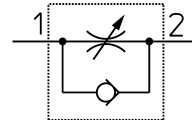


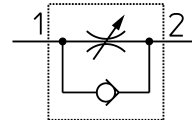
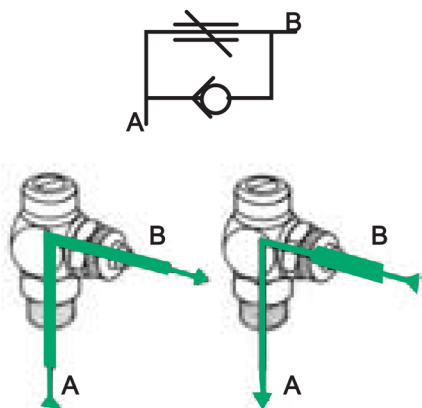
Dosatore di flusso unidirezionale 1/8"- tubo 6x8



CARATTERISTICA	VALORE
Pressione max. di esercizio	10 bar
Temperatura dell'ambiente di lavoro	-10 ÷ 85 °C
Portata 6 bar da A a B	500 l/min
Portata 6 bar da B a A	0 ÷ 450 l/min



Originale: 3716×4110 px (314.6×348.0 mm) | Mostrata: 189.0×209.0 mm | Ridimensionata: Sì

**Regolatore per valvola in alimentazione (meter-in)**

Originale: 693×658 px (58.7×55.7 mm) | Mostrata: 58.7×55.7 mm | Ridimensionata: NO