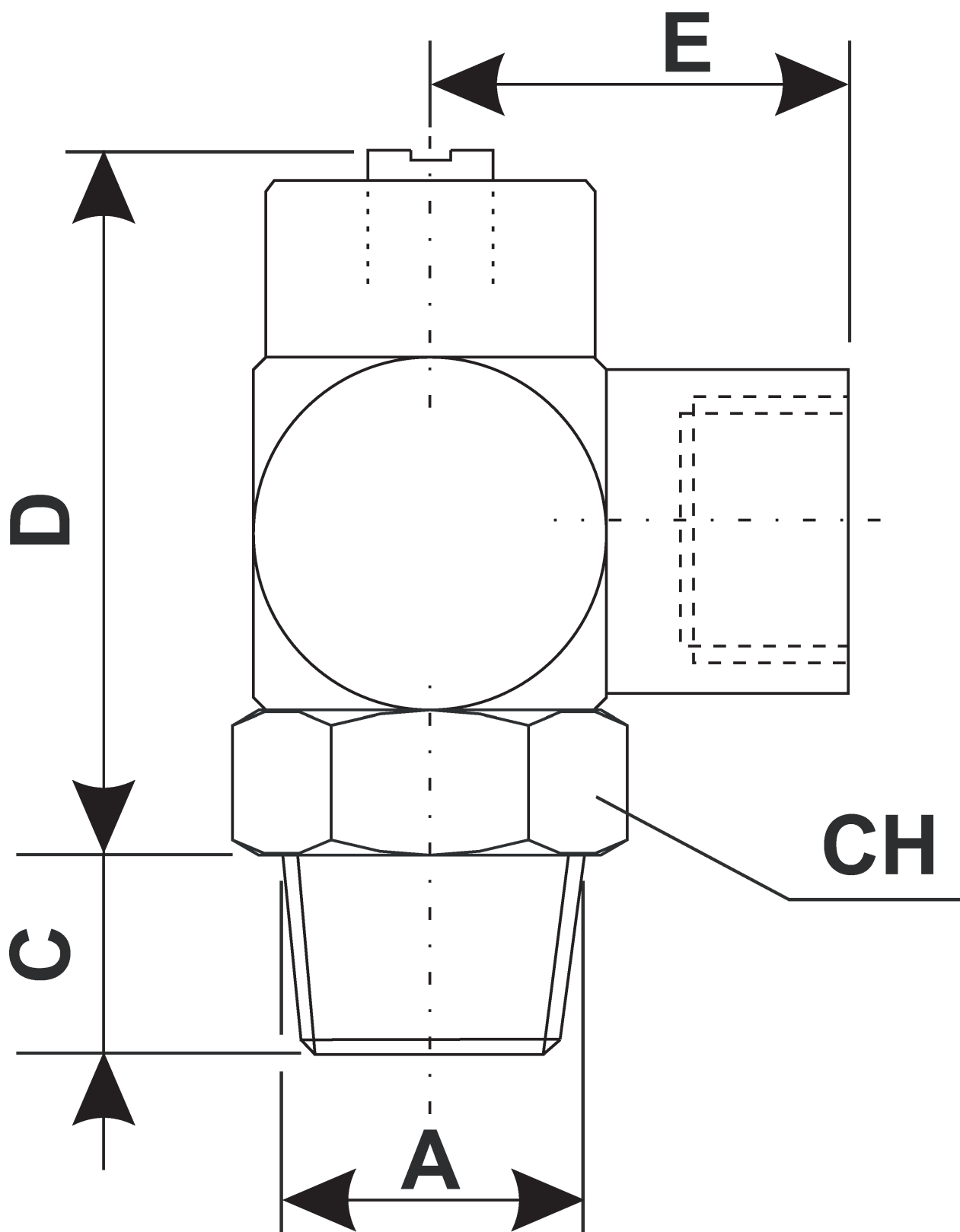
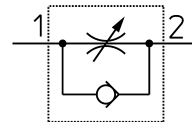


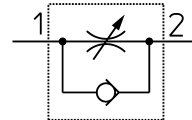
*Dosatore di flusso unidirezionale 1/8"- tubo 1/8"*



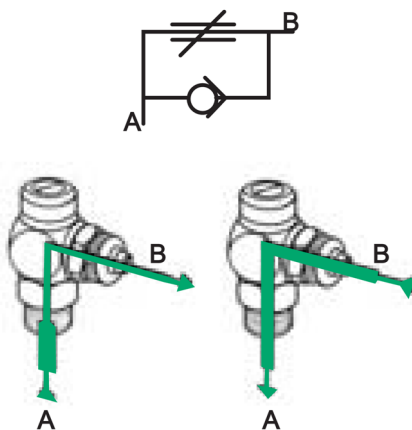
| CARATTERISTICA                      | VALORE        |
|-------------------------------------|---------------|
| Pressione max. di esercizio         | 10 bar        |
| Temperatura dell'ambiente di lavoro | -10 ÷ 85 °C   |
| Portata 6 bar da A a B              | 0 ÷ 450 l/min |
| Portata 6 bar da B a A              | 500 l/min     |



Originale: 3497×4110 px (296.1×348.0 mm) | Mostrata: 189.0×222.1 mm | Ridimensionata: Sì



## Regolatore per cilindro in scarico (meter-out)



Originale: 703×705 px (59.5×59.7 mm) | Mostrata: 59.5×59.7 mm | Ridimensionata: NO