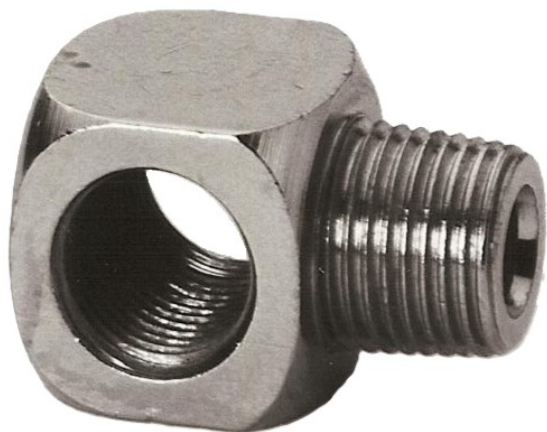
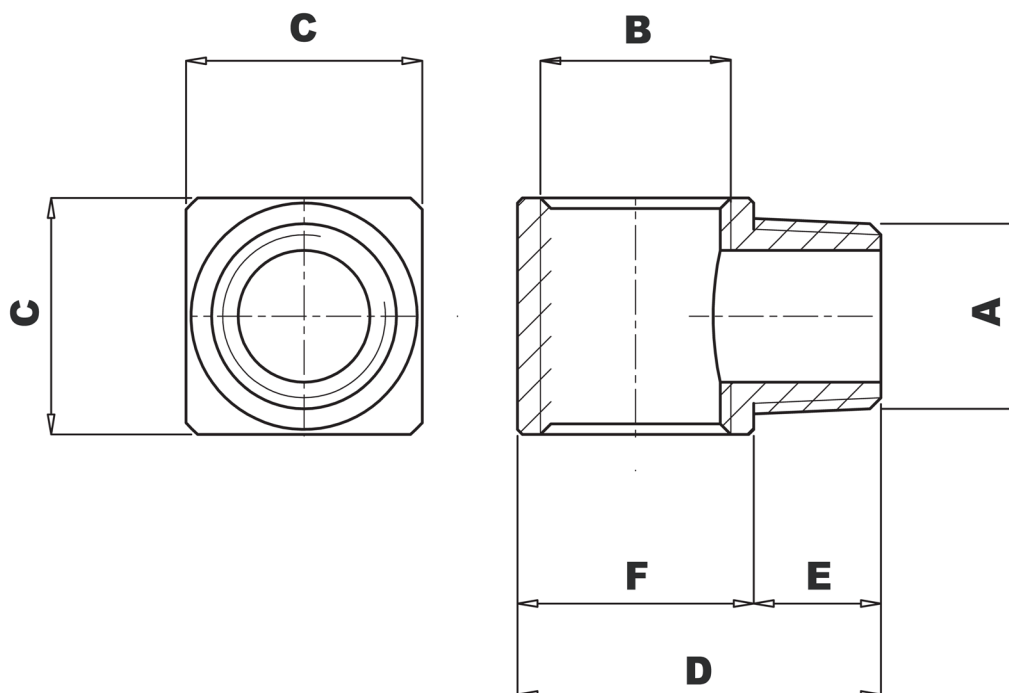


Raccordo T da barra M5 maschio centrale



CARATTERISTICA	VALORE
Materiale:	Ottone nichelato



Originale: 1589×1082 px (134.5×91.6 mm) | Mostrata: 134.5×91.6 mm | Ridimensionata: NO

A	B	C	D	E	F
M5	M5	9	13,6	4,6	9