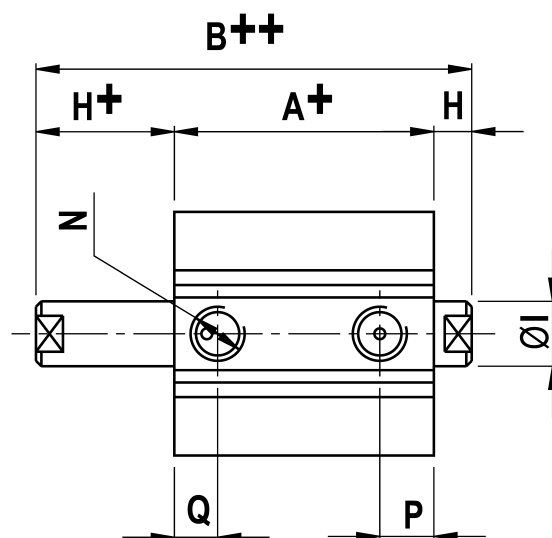
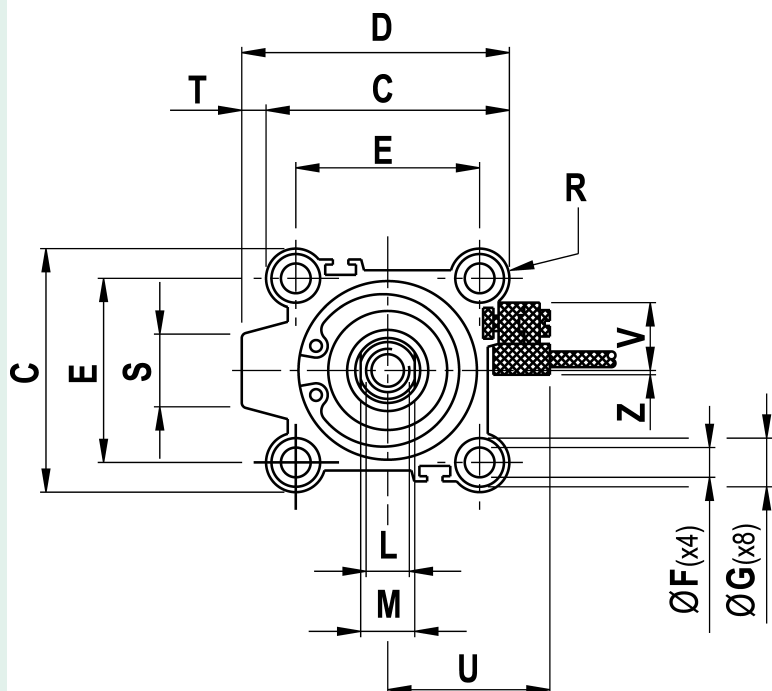
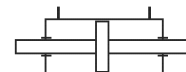


*Cilindro a corsa breve alesaggio 25 corsa 30- a doppio effetto Stelo passante  
Magnetico*



CARATTERISTICA	VALORE
Alesaggio (mm)	25
Corsa (mm)	30
Pressione di esercizio	[2;10] bar
Temperatura dell'ambiente di lavoro	[-10;+85] °C



**+** = corsa - stroke    **++** = corsa (2x) - stroke (2x)

Originale: 11069×5331 px (937.2×451.4 mm) | Mostrata: 189.0×91.0 mm | Ridimensionata: Sì

A	B	C	D	E	F	G	H	I	L	M	N	P	Q	R	S	T	U	V	Z
39,0+	49,D++	40	40	28	5,5	8,7(x7,0	5	12	M6(x12	10	M5	11	11	6	11	-	28	8	6